

120lm/W
C - Line Serie

PERFEKT LICHT

LED Lichtband-System



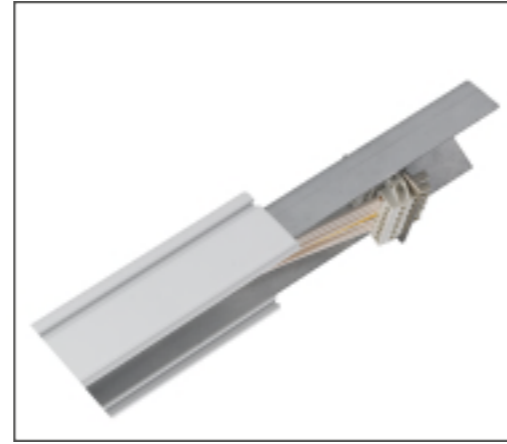
Trunking Rail

5 Wire: L1, L2, L3, N, FG

7 Wire: L1, L2, L3, N, FG + 2 wires for Dimming

11 Wire: L1, L2, L3, N, FG + 2 wires for Dimming
+ 4 wires for Emergency converter & Battery

Color Option: WH(White), BK(Black), SV(Silver)



| Length | Discription | Code No. | VIP |
|--------|-------------|--|-----|
| 570mm | 5 Wire | CST-06X ₁ -05X ₂ | |
| | 7 Wire | CST-06X ₁ -07X ₂ | |
| | 11 Wire | CST-06X ₁ -11X ₂ | |
| 1416mm | 5 Wire | CST-15X ₁ -05X ₂ | |
| | 7 Wire | CST-15X ₁ -07X ₂ | |
| | 11 Wire | CST-15X ₁ -11X ₂ | |
| 2832mm | 5 Wire | CST-30X ₁ -05X ₂ | |
| | 7 Wire | CST-30X ₁ -07X ₂ | |
| | 11 Wire | CST-30X ₁ -11X ₂ | |
| 4248mm | 5 Wire | CST-45X ₁ -05X ₂ | |
| | 7 Wire | CST-45X ₁ -07X ₂ | |
| | 11 Wire | CST-45X ₁ -11X ₂ | |

Price term: EXW Shenzhen, validity: 3 months

X₁ stands for Trunking rail option: N/DC/E, X₂ stands for Color: WH/BK/SV, for details, please refer to order number list.
12832mm and 14248mm trunking rail only for full container load order

Luminaire



CTT: 3000K, 4000K, 5000K, 6000K

Lens: SP(Sharp-25°), NR(Narrow-60°), WD(Wide-90°), FF(Flat-140°)

DS(Double Asymmetric), RS/LS(Right/Left Asymmetric)

Power Factor: 0.95, CRI: >80Ra

Color Option: WH(White), BK(Black), SV(Silver)

| Length | Power | Lumen | Code No. | VIP |
|--------|-------|---------|--|-----|
| 570mm | 16W | 1900lm | CSL-0616-X ₁ X ₂ -05X ₃ | |
| | 26W | 3100lm | CSL-0626-X ₁ X ₂ -05X ₃ | |
| | 32W | 3800lm | CSL-0632-X ₁ X ₂ -05X ₃ | |
| 1416mm | 40W | 4800lm | CSL-1540-X ₁ X ₂ -05X ₃ | |
| | 65W | 7800lm | CSL-1565-X ₁ X ₂ -05X ₃ | |
| | 80W | 9600lm | CSL-1580-X ₁ X ₂ -05X ₃ | |
| 2832mm | 65W | 7800lm | CSL-3065-X ₁ X ₂ -05X ₃ | |
| | 80W | 9600lm | CSL-3080-X ₁ X ₂ -05X ₃ | |
| | 120W | 14400lm | CSL-3012-X ₁ X ₂ -05X ₃ | |
| 4248mm | 96W | 11500lm | CSL-4596-X ₁ X ₂ -05X ₃ | |
| | 120W | 14400lm | CSL-4512-X ₁ X ₂ -05X ₃ | |

Price term: EXW Shenzhen, validity: 3 months

X₁ stands for CTT: 30/40/50/60, X₂ stands for Beam angle: SP/NR/WD/FF/RS/LS, X₃ stands for Color: WH/BK/SV

There are 2 options for optic: Lens & PC, Beam option for: Lens: SP/NR/WD/FF/RS/LS, Beam option for: PC Cover: R/FF/LS/RS
12832mm and 14248mm luminaire only for full container load order

Function Module

Discription

Code No.

VIP

Dimming Driver



1-10V Dimming

CSX₁-X₂-10

DALI Dimming

CSX₁-X₂-DA

DALI PS

CSA-PS

Emergency Driver



with 6W output

CSD-E1

with 12W output

CSD-E2

Emergency Battery



1800mAh Battery

CSB1

3600mAh Battery

CSB2

Price Term: EXW Shenzhen, Validity: 3 months

X₁ stands for driver standard (American/European); 1/2, X₂ stands for Power Dimming and Emergency function, depends on the cable color and wire

PERFEKT LIGHT

Function Module

Discription

Code No.

VIP

Sensor Module



570mm

10m detection

CSS-0610-X₁X₂-X₃

20m detection

CSS-0620-X₁X₂-X₃

1416mm

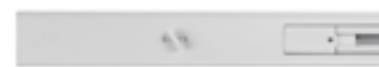
10m detection

CSS-1510-X₁X₂-X₃

20m detection

CSS-1520-X₁X₂-X₃

Track Rail Module



570mm

5 Wire

CST-06S-05X₂

7 Wire

CST-06S-07X₂

11 Wire

CST-06S-11X₂

1416mm

5 Wire

CST-15S-05X₂

7 Wire

CST-15S-07X₂

11 Wire

CST-15S-11X₂

Price Term: EXW Shenzhen, Validity: 3 months

X₁ stands for wire option: 05/07/11, X₂ stands for Color: WH/BL/GR, X₃ stands for dimming option: DA/10
Sensor module options: Daylight / Microwave / Both

PERFEKT LIGHT

Accessory

Discription

Code No.

VIP

Feed In Box



5 Wire

CSN-B-05X₂

7 Wire

CSN-B-07X₂

11 Wire

CSN-B-11X₂

L Node Connector



5 Wire

CSN-LX₁-05X₂

7 Wire

CSN-LX₁-07X₂

11 Wire

CSN-LX₁-11X₂

T Node Connector



5 Wire

CSN-TX₁-05X₂

7 Wire

CSN-TX₁-07X₂

11 Wire

CSN-TX₁-11X₂

X Node Connector



5 Wire

CSN-XX₁-05X₂

7 Wire

CSN-XX₁-07X₂

11 Wire

CSN-XX₁-11X₂

Mass Order Qty > 300pcs

Accessory

Discription

Code No.

VIP

Power Supply Module



570mm

CST-06PU-X₁X₂

1416mm

CST-15PU-X₁X₂

E27/E14 Light Module



570mm

CST-06E12-X₁X₂

1416mm

CST-15E12-X₁X₂

Blank Cover



PC - 570mm

CSA-BC-06X₂

CSA-BC-06SV

PC - 1416mm

CSA-BC-15X₂

CSA-BC-15SV

End Cap



with Coreshine LOGO
or Neutral

CSA-EC-X₂

Accessory

Discription

Code No.

VIP

Suspension Accessory



Cord-3m

CSA-CO-3000

Rod-1m

CSA-RO-1000

Chain-3m

CSA-CH-3000

Surface-Mounted Accessory



for surface mounting

CSA-SU

Mounting Clip



with hole of diameter
13.5mm

CSP-052807

Female Connector



5 Wire

CSA-FC-05

7 Wire

CSA-FC-07

Wire Connector



Single Wire Connector

CSA-SC

Accessory

Discription

Code No.

VIP

Feed In Connector



5 Wire

CSA-FN-05

7 Wire

CSA-FN-07

11 Wire

CSA-FN-11

Conduit Gland



M20*1.5mm, outlet 15.2mm

CSA-CG

Power Supply Cable



20A, 2.5mm²*3
L: 3000mm or customized

CSA-PL-3000

Cable Gland



M20*1.5mm, outlet 14.0mm

CSA-CC

Conduit



inner diameter 14.1mm
L: 2000mm or customized

CSA-CD-2000